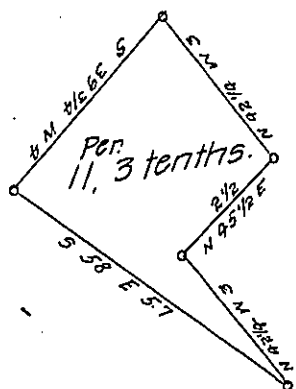


FORM NO. 1.

York County Shore.



Lancaster County Shore

A Draught of Willow Island opposite land of Thomas Neel about thirty perches west of said land and about twenty perches north of Turkey Island about thirty perches East of the Bear Island and about thirty perches south east of the Deep water Island containing eleven perches and three tenths Strict measure Surveyed in pursuance of a warrant dated the 14th day of August A.D. 1818 granted James Lebazius John Campbell Matthew Campbell & Peter Smith
Pr. Jacob Hibshman D.S.

To Jacob Spanqler Esqr.
Surveyor General.

IN TESTIMONY that the above is a copy of the original remaining on file in the Department of Internal Affairs of Pennsylvania, made conformably to an Act of Assembly approved the 16th day of February 1833, I have hereunto set my hand and caused the Seal of said Department to be affixed at Harrisburg, this third day of January 1908

Henry Howell
Secretary of Internal Affairs.